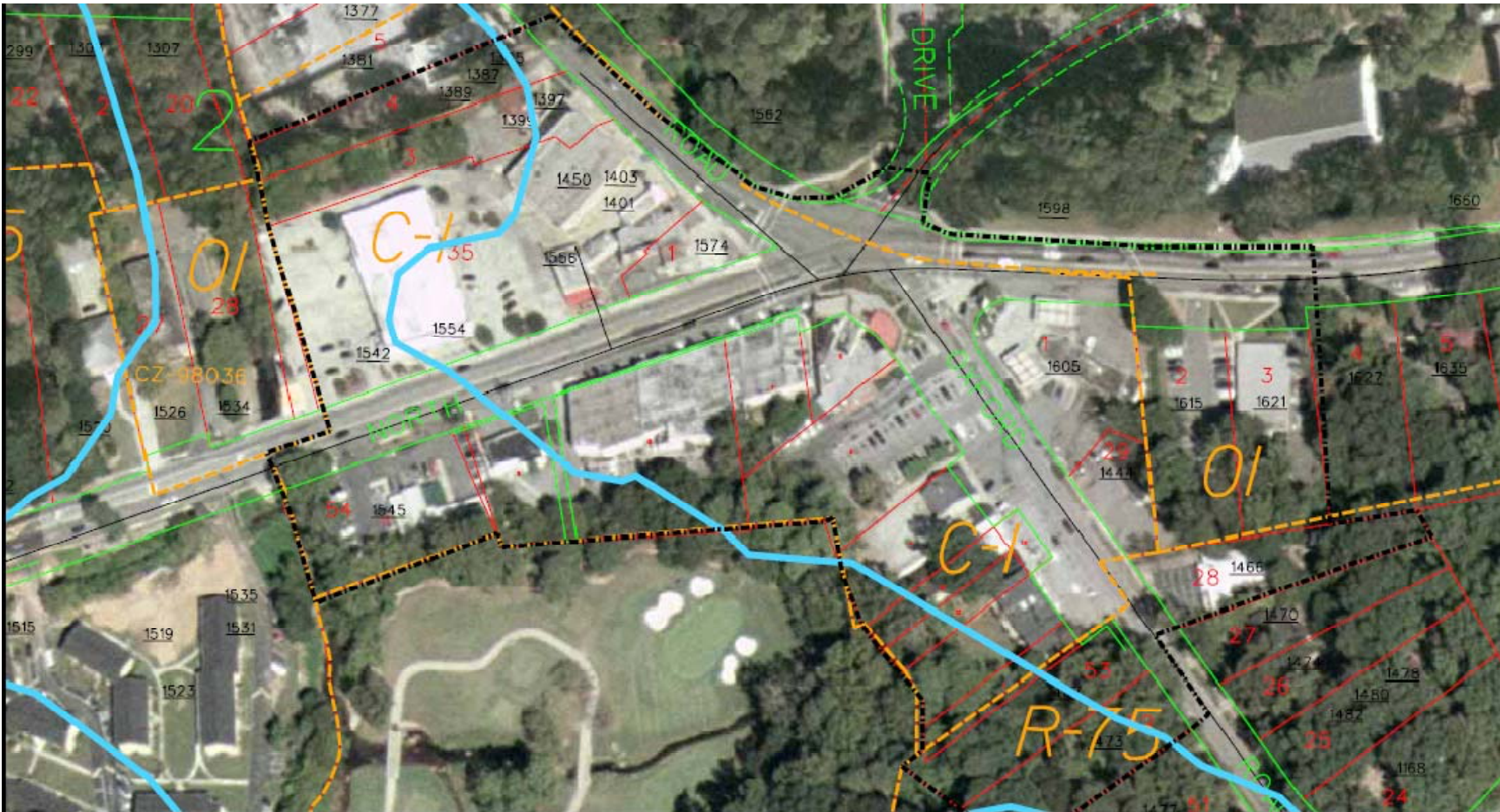


Emory Village Proposed Zoning Overlay District



KEY:

Emory Village Zoning Overlay District is denoted by the area within the black dashed line. Floodplain areas are within the blue lines. Land parcels are denoted by red lines. Zoning classifications are denoted by orange lines.

NOTE: Areas within the blue lines (floodplain parcels) cannot be redeveloped. This includes Panera Bread (entire parcel), Dry Cleaners (all but a very small corner of the site), CVS (about ¾ of the building and parking lot area), and all but a very small area of parcels 3 (1397-1399) and 4 (1385-1389) on N. Oxford.