

**URS**

400 NORTHPARK TOWN CENTER  
1000 ABERNATHY ROAD, SUITE 900  
ATLANTA, GEORGIA 30328  
TEL 678-808-8800  
FAX 678-808-8400

**EDAW**

817 WEST PEACHTREE STREET NW  
SUITE 770  
ATLANTA, GEORGIA 30308  
TEL 404-870-5339  
FAX 404-870-6590

W&A PROJECT NUMBER - 04080 / 09-07-06

**WOMACK & ASSOCIATES**  
CONSULTING ENGINEERS

4200 Perimeter Park South, Suite 225  
Atlanta, Georgia 30341  
Voice 770-458-3005 Fax 770-458-8388

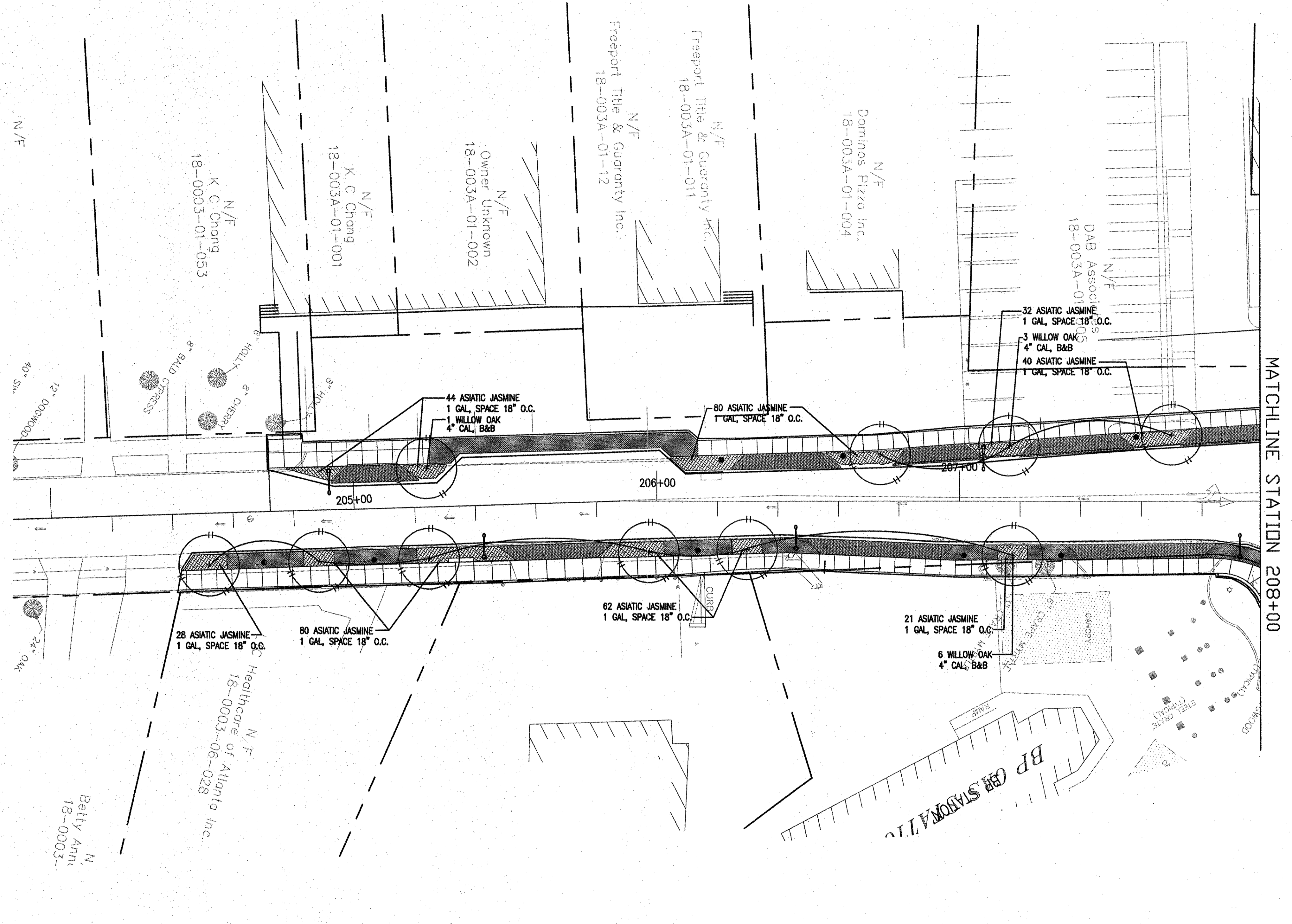
PLOT SCALE : 1 = 1

REVISION DATES

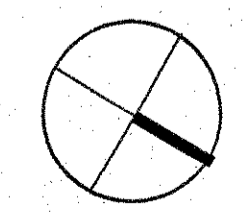
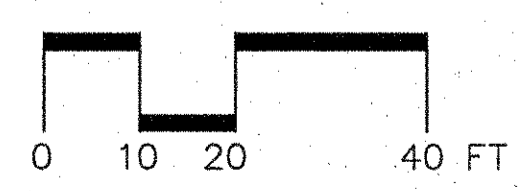

DEKALB COUNTY  
DEPARTMENT OF PUBLIC WORKS  
**EMORY VILLAGE REVITALIZATION PROJECT**  
PLANTING PLAN

DRAWING No.

29.24



MATCHLINE STATION 208+00



**URS**

400 NORTHPARK TOWN CENTER  
1000 ABERNATHY ROAD, SUITE 900  
ATLANTA, GEORGIA 30328  
TEL 678-808-8800  
FAX 678-808-8400

**EDAW**

817 WEST PEACHTREE STREET NW  
SUITE 770  
ATLANTA, GEORGIA 30308  
TEL 404-870-5339  
FAX 404-870-6590

W&A PROJECT NUMBER - 04080 / 09-07-06

**WOMACK & ASSOCIATES**  
CONSULTING ENGINEERS

4200 Perimeter Park South, Suite 225  
Atlanta, Georgia 30341  
Voice 770-458-3005 Fax 770-458-8388

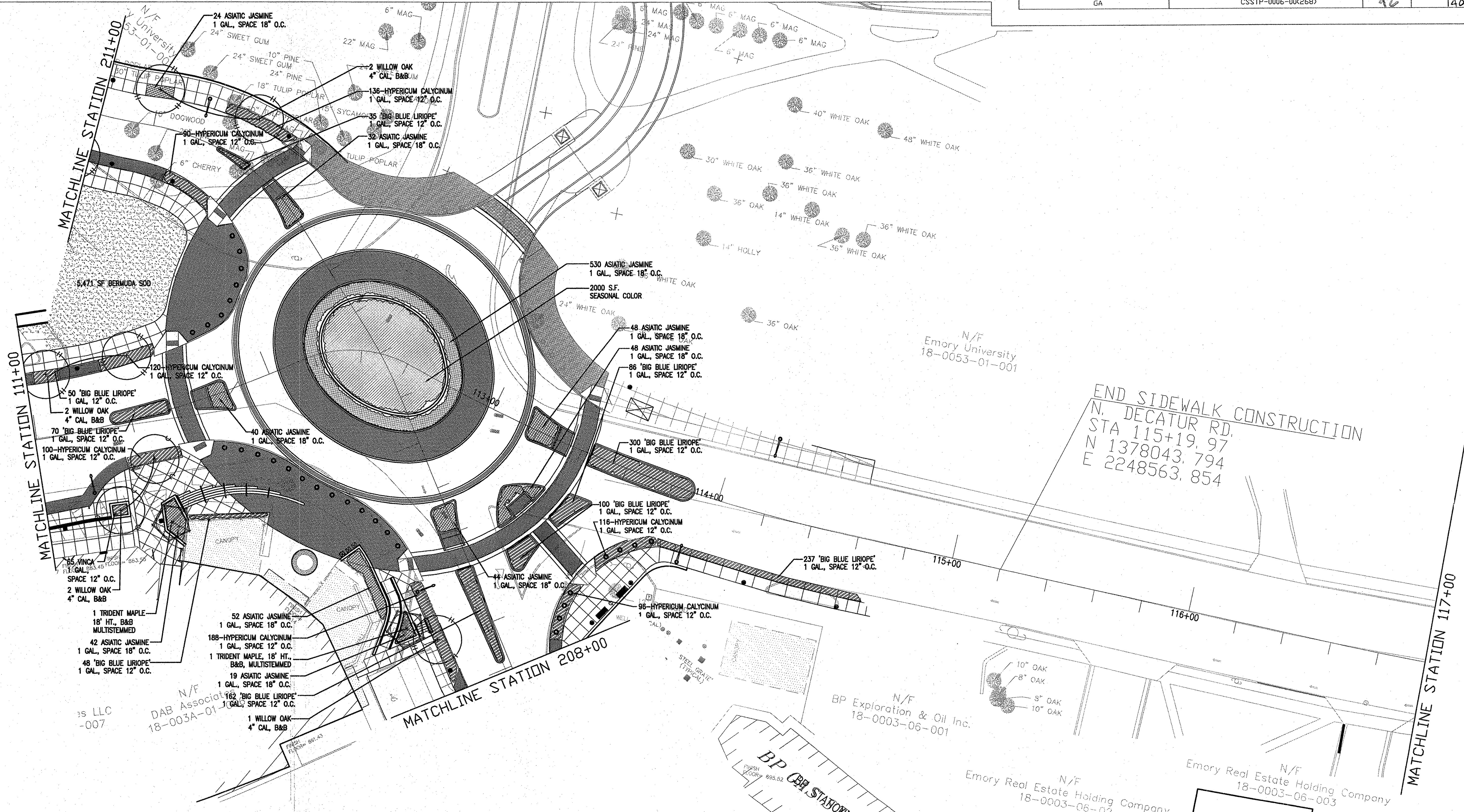
PLOT SCALE : 1 = 1

REVISION DATES

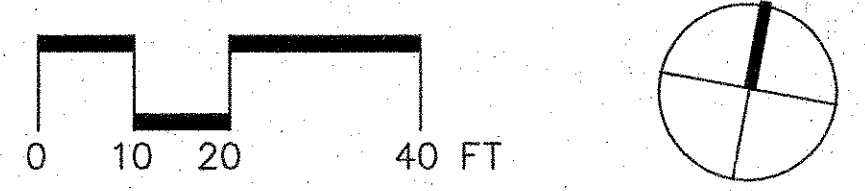
NO.	DATE	DESCRIPTION

DEKALB COUNTY  
DEPARTMENT OF PUBLIC WORKS  
**EMORY VILLAGE REVITALIZATION PROJECT**  
PLANTING PLAN

DRAWING No.  
**29.23**



END SIDEWALK CONSTRUCTION  
 N. DECATUR RD.  
 STA 115+19.97  
 N 1378043.794  
 E 2248563.854



**URS**  
 400 NORTHPARK TOWN CENTER  
 1000 ABERNATHY ROAD, SUITE 900  
 ATLANTA, GEORGIA 30328  
 TEL 678-808-8800  
 FAX 678-808-8400

**EDAW**  
 817 WEST PEACHTREE STREET NW  
 SUITE 770  
 ATLANTA, GEORGIA 30308  
 TEL 404-870-5339  
 FAX 404-870-6590

W&A PROJECT NUMBER - 04080 / 09-07-06  
**WOMACK & ASSOCIATES**  
 CONSULTING ENGINEERS  
 4200 Perimeter Park South, Suite 225  
 Atlanta, Georgia 30341  
 Voice 770-458-3005 Fax 770-458-8388  
 PLOT SCALE : 1 = 1

REVISION DATES	

DEKALB COUNTY  
 DEPARTMENT OF PUBLIC WORKS  
**EMORY VILLAGE REVITALIZATION PROJECT**  
 PLANTING PLAN

DRAWING No.  
**29.22**

BEGIN SIDEWALK CONSTRUCTION  
 N. DECATUR RD.  
 STA 105+80.00  
 N 1877856.151  
 E 2247669.434

N/F  
 Claiborne H Darden  
 18-0053-02-028

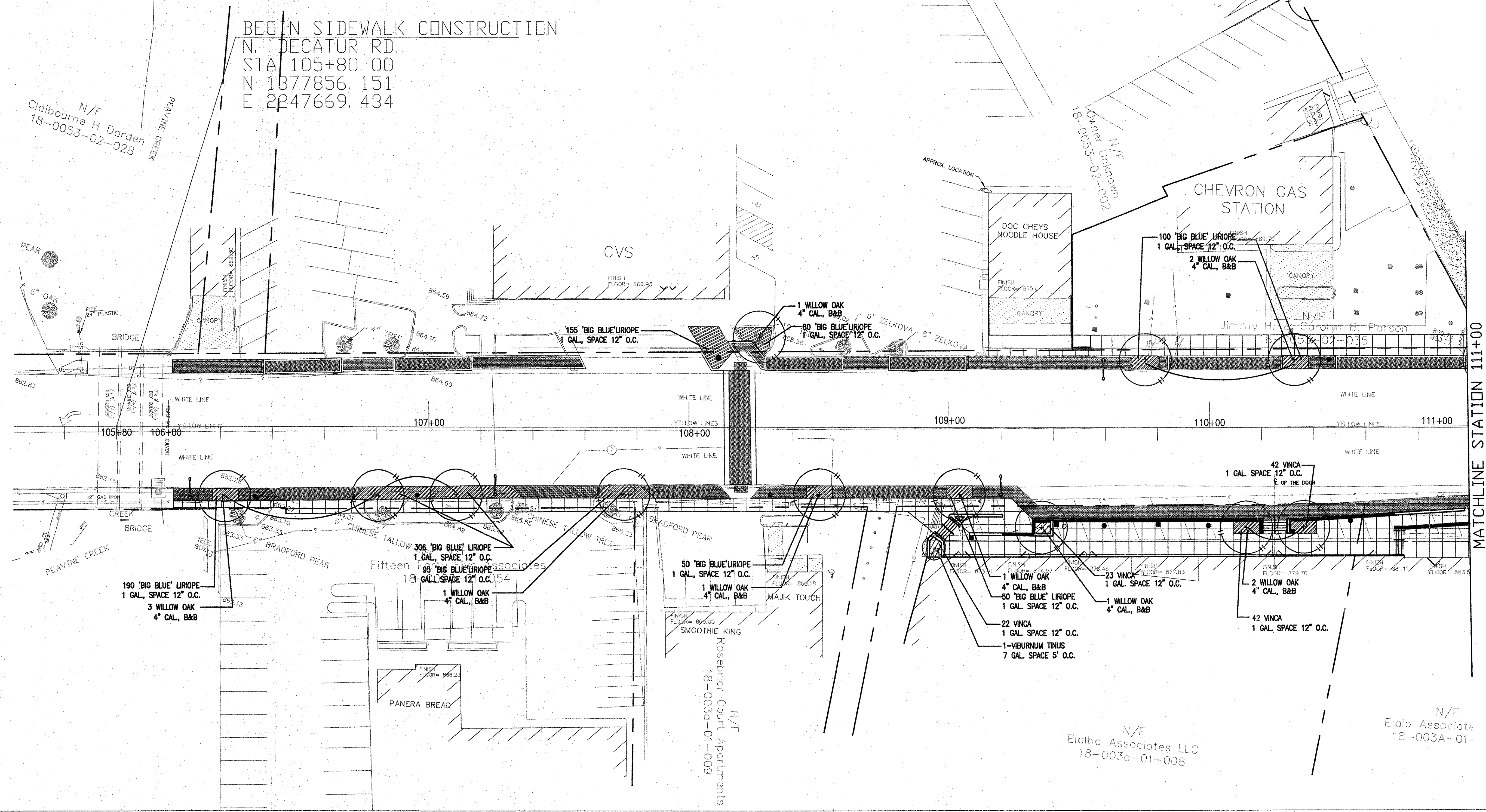
N/F  
 18-0053-02-002

CHEVRON GAS STATION

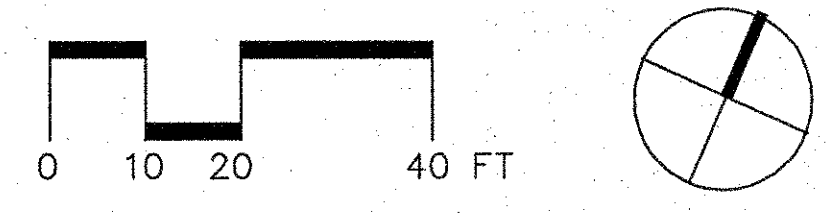
DOC CHEYS NOODLE HOUSE

CVS

Jimmy H. & Carolyn B. Parson  
 18-0052-02-035



MATCHLINE STATION 111+00



**URS**  
 400 NORTHPARK TOWN CENTER  
 1000 ABERNATHY ROAD, SUITE 900  
 ATLANTA, GEORGIA 30328  
 TEL 678-808-8800  
 FAX 678-808-8400

**EDAW**  
 817 WEST PEACHTREE STREET NW  
 SUITE 770  
 ATLANTA, GEORGIA 30308  
 TEL 404-870-5339  
 FAX 404-870-6590

W&A PROJECT NUMBER - 04080 / 09-07-06  
**WOMACK & ASSOCIATES**  
 CONSULTING ENGINEERS  
 4200 Perimeter Park South, Suite 225  
 Atlanta, Georgia 30341  
 Voice 770-458-3005 Fax 770-458-8388  
 PLOT SCALE : 1 = 1

REVISION DATES		

DEKALB COUNTY  
 DEPARTMENT OF PUBLIC WORKS  
**EMORY VILLAGE REVITALIZATION PROJECT**  
 PLANTING PLAN

DRAWING No.  
 29.21